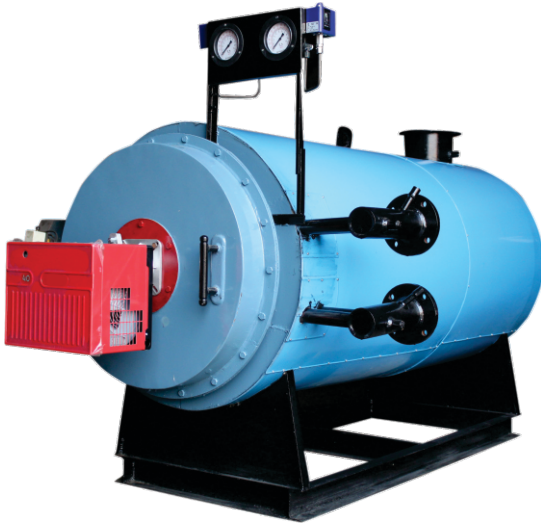


## ► THERMIC FLUID / THERMAL OIL HEATER



- Capacity: 50,000 to 20,00,000 kcal/hr
- LDO / GAS Fuel Firing
- 86% Efficiency
- On-Off / Low-High Control
- 300°C Maximum Outlet Temperature
- Auto / Manual Operation
- Highly Efficient
- Truly Maintenance Free
- Vertical As Well As Horizontal Orientation

- Capacity 50,000 to 20,00,000 kcal/hr
- Coal / Wood / Briquettes Fuel Firing
- 76% Efficiency
- On-Off Control
- 300°C Maximum Outlet Temperature
- Auto / Manual Operation
- Highly Efficient
- Truly Maintenance Free
- Vertical As Well As Horizontal Orientation



### SALIENT FEATURES

- Efficient heat transfer with optimum combustion.
- Three pass design for LDO / GAS fuel fired.
- Three pass as well as Four pass design for solid fuel fired.
- Reduced excess air with balanced draft system.
- 300°C at near atmospheric pressure.
- Truly maintenance free.
- Easy access for inspection & cleaning.
- Energy efficient.
- Fully automatic in operation, so no running attention required.
- Pre-heated combustion air is an integral part of the design giving accurate & complete combustion.
- Robust & reliable components with optimum maintenance for blower, pump & other controls.
- Easy access to all parts for maintenance.
- Powder coated control panel with systematic wiring layout with ferrule numbers etc. for easy trouble shooting as well as for better performance.

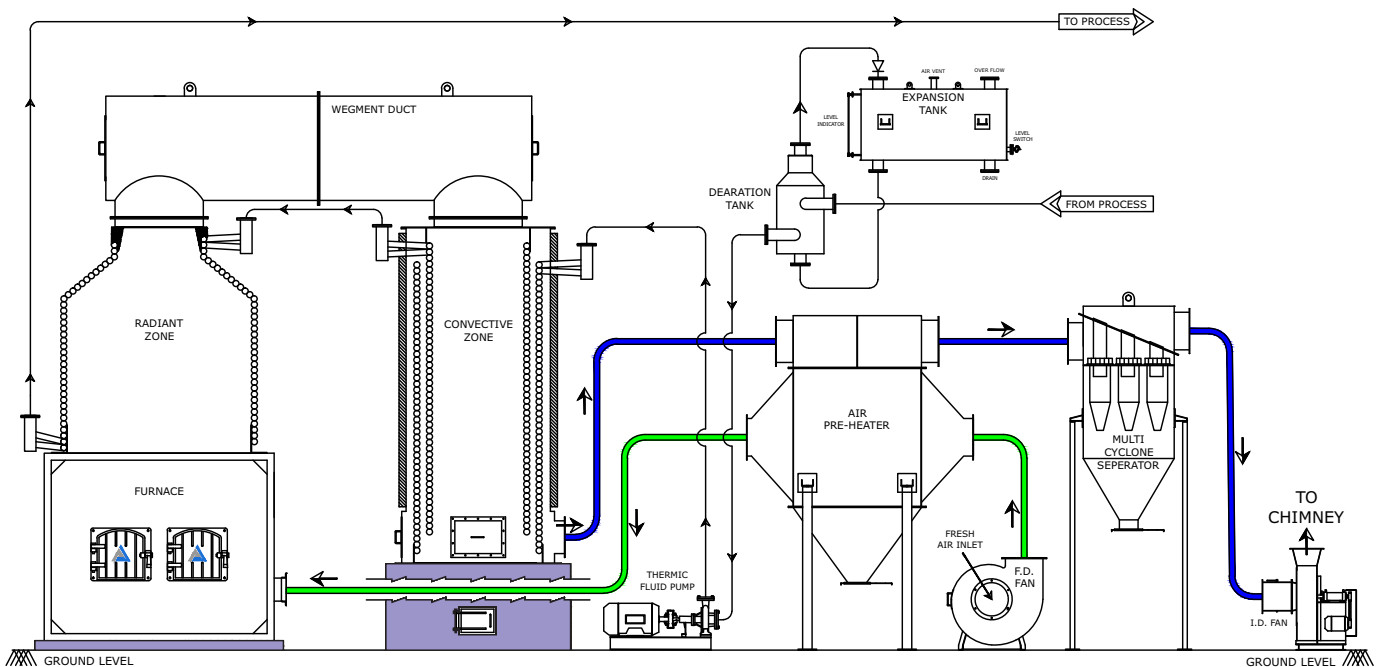
## CONTROLS & SAFETIES

- Interlock for thermic fluid circulating pump.
- Motor trip indication lamp on control panel.
- Low level in expansion tank.
- High thermic fluid supply as well as return temperature.
- Separate pressure switch for low flow / no flow & high pressure.
- Flame monitor through LDR / UV cell.

## TECHNICAL SPECIFICATIONS

Model	ATF-100	ATF-200	ATF-300	ATF-400	ATF-600	ATF-800	ATF-1000	ATF-1500	ATF-2000
Capacity (kcal/hr)	1,00,000	2,00,000	3,00,000	4,00,000	6,00,000	8,00,000	10,00,000	15,00,000	20,00,000
Max. Outlet Temperature (°C)	300	300	300	300	300	300	300	300	300
Fuel Consumption	LDO (kg/hr)	11.4	22.8	33.8	45	67.6	92	113	229
	Natural Gas (m <sup>3</sup> /hr)	14	28	42	56	84	110	140	274
	Coal / Wood (kg/hr)	35	70	100	133	200	267	330	670
Thermic Fluid Circulating Pump	5 hp	7.5 hp	10 hp	15 hp	15 hp	20 hp	20 hp	30 hp	40 hp
I. D. Fan	2 hp	2 hp	3 hp	5 hp	7.5 hp	10 hp	10 hp	20 hp	30 hp
F. D. Fan (with coal fired)	-	2 hp	2 hp	2 hp	3 hp	5 hp	7.5 hp	10 hp	15 hp
Control	On-Off	On-Off	On-Off	On-Off	On-Off	On-Off	On-Off	On-Off	On-Off
Power Supply	415 Volts 3-Phase 50 Hz								

## P&I DIAGRAM FOR SOLID FUEL FIRED



**ARIZON**  
THERMAL SYSTEMS  
Creating Value Through Engineering

25+26/21, Nilson Industrial Compound,  
Phase - 1, GIDC Vatva, Ahmedabad - 382445, Gujarat, INDIA.

079-29709025

+91-8866441133, +91-9725128866, +91-9879625931, +91-9426016496

info@arizonthermal.com www.arizonthermal.com



CONTACT DETAILS